

L3 – “End to End Process”

DSO Enabled Services only
DSO Procured Services only
Either/Both

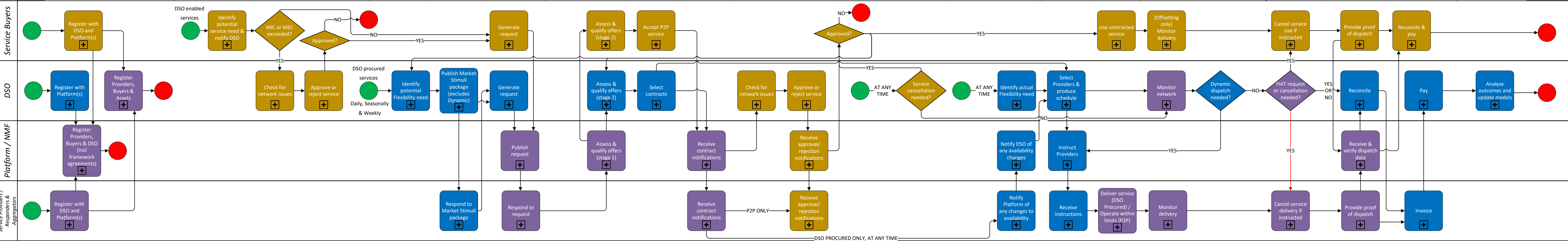
V.14 15-6-22 Register Identify need (P2P) Trial pre-approval Identify need (DSO) Publish stimuli Publish request Assess & qualify Select Notify Approval Withdraw approval Schedule Instruct Deliver Monitor Cancel Verify Settle Analyse

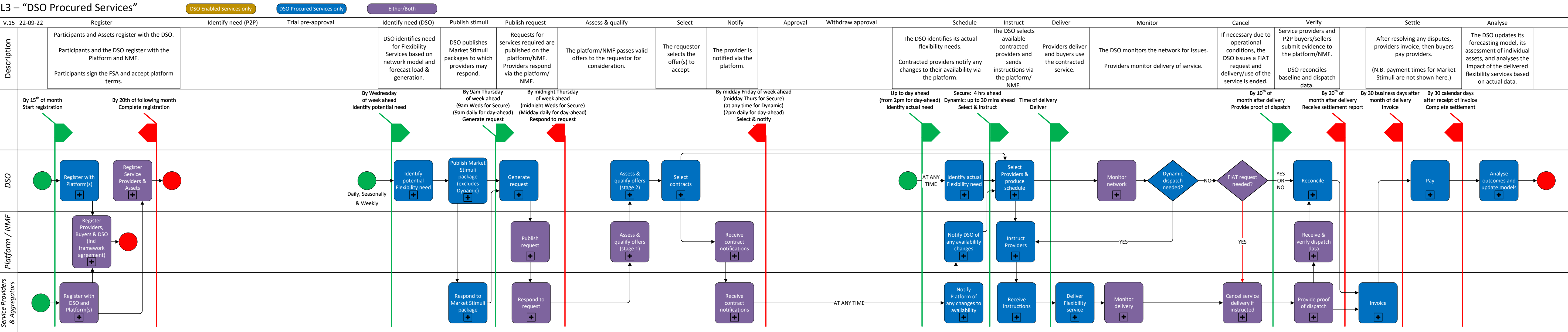
Description

Participants and Assets register with the DSO. Participants and the DSO register with the Platform and NMF. Participants sign the FSA and/or P2P Term Sheet and accept platform terms.

Participants intending to buy P2P services notify the DSO of the maximum MIC or MEC increase required. DSO either approves the change (possibly with a lower limit) or rejects it.

DSO identifies need for Flexibility Services based on network model and forecast load & generation. DSO publishes Market Stimuli packages to which providers may respond. Requests for services required are published on the platform/NMF. Providers respond via the platform/NMF. The platform/NMF passes valid offers to the requestor for consideration. The requestor selects the offer(s) to accept. The provider is notified via the platform. The DSO checks notified P2P trades and rejects any that would cause network issues. At any time before dispatch the DSO may withdraw approval for a P2P trade due to changes in network conditions. The DSO identifies its actual flexibility needs. Contracted providers notify any changes to their availability via the platform. The DSO selects available contracted providers and sends instructions via the platform/NMF. Providers deliver and buyers use the contracted service. The DSO monitors the network for issues. Providers monitor delivery of service. If necessary due to operational conditions, the DSO issues a FIAT request and delivery/use of the service is ended. Service providers and P2P buyers/sellers submit evidence to the platform/NMF. DSO reconciles baseline and dispatch data. After resolving any disputes, providers invoice, then buyers pay providers. The DSO updates its forecasting model, its assessment of individual assets, and analyses the impact of the delivered flexibility services based on actual data.



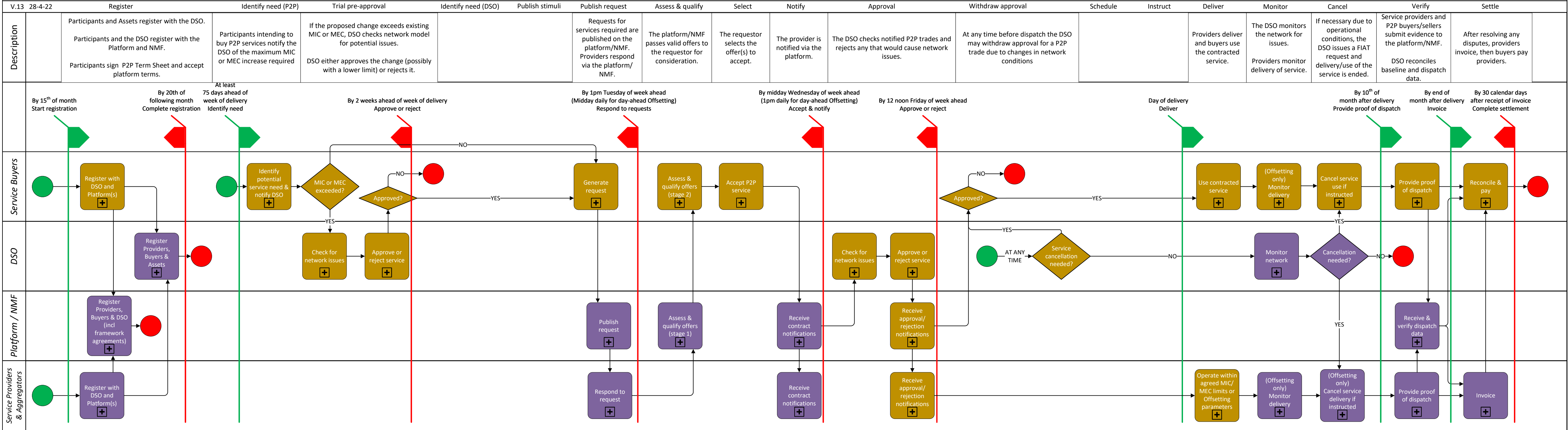


L3 – “DSO Enabled Services” (Service Buyer initiated)

DSO Enabled Services only

DSO Procured Services only

Either/Both



L3 – “DSO Enabled Services” (Service Seller initiated)

DSO Enabled Services only

DSO Procured Services only

Either/Both

